



Mercer+Mettle™ Puffy Jacket MM7210



Professional and polished while protecting from the elements, this lofty, high-performing puffy is intentionally designed to lend dependable warmth and transitional style for downtown or out-of-town. The DWR finish sheds moisture while the blown-in synthetic insulation gives the soft, lightweight and pliable effect of down with easy washability.

Fabric+Weight

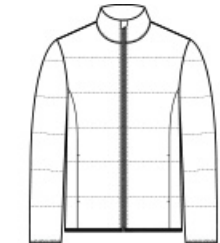
- 100% polyester
- 5K/3K waterproof breathable fabric
- 12-ounce, 100% polyester blown insulation

Features+Benefits

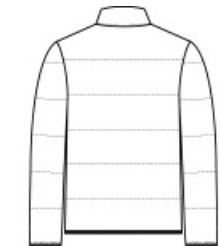
- Zip-through collar
- Molded front zipper
- Hidden, zippered hand pockets
- Elastic binding at cuffs and hem

CARE INSTRUCTIONS

Machine Wash Cold Gentle Cycle With Like Colors. Only Non-Chlorine Bleach When Needed. Tumble Dry Low. Cool Iron If Necessary. Do Not Dry Clean.

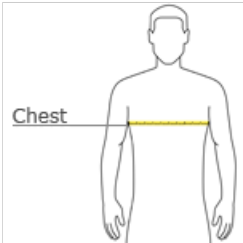


front



back

HOW TO MEASURE



CHEST WIDTH
Measure under the arm and around the fullest part of the chest with arms down, keeping tape horizontal.

SIZE CHART

	2XL	3XL	4XL	XS	S	M	L	XL
Chest	48-51	52-56	57-61	32-34	35-37	38-40	41-43	44-47

COLOR INFORMATION



Anchor Grey
PMS 426C



Deep Black
PMS BLACK C



Night Navy
PMS 532C



Townsend Green
PMS NO MATCH