



SNOW CONTROL **REDEFINE CLEAN SCRAPE**

When you commit to clearing a lot, you mean it. No snow left behind. But not all plows are created equal. With TRACE™ edge technology, the all-new POWER PUSHER™ plows move massive amounts of snow—scraping down to the pavement—so you can save the time and money of dropping salt. The POWER PUSHER is available in 8', 10', 12', 14', and 16' widths.

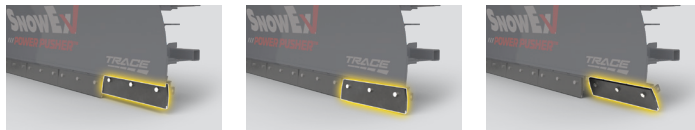


POWER PUSHER™ WITH TRACE™ EDGE TECHNOLOGY

The all-new POWER PUSHER line up of plows come in 8', 10', 12', 14', and 16' widths. A common carrier attachment system with a floating coupler allows compatibility with skid loaders, wheel loaders, tractors, and backhoe loaders. The patent-pending TRACE edge technology allows the cutting edge to contour to the plowable surface for maximum snow removal. The SnowEx® dealer network is available for best-in-class service and support.

TRACE EDGE TECHNOLOGY

The terrain-response advanced cutting edge is comprised of independent, 2' sections that raise, oscillate, and trip to accommodate contours and obstacles in the plowable surface. Working together, the sections remove more snow, reducing the amount of salt required. Greasing locations allow the operator to keep the components well lubricated for maximum performance.



RAISE

OSCILLATE

TRIP

SELF-LEVELING SIDE PLATES WITH REVERSIBLE, BOLT-ON SHOES

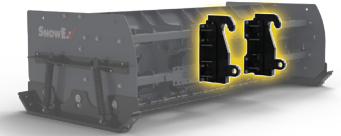
The side plates ensure the TRACE edge remains in direct contact with the plowable surface. The reversible, bolt-on shoe makes serviceability easy, allowing you to use both edges of the shoe before replacing. The bolt-on design makes replacement in the field possible with a 3/4" socket, ratchet, and 3/4" wrench.

3/4" CUTTING EDGE WITH CARBIDE INSERTS

The POWER PUSHER plow withstands the most grueling commercial snow removal conditions. Each 2' section comes standard with a 3/4" cutting edge with carbide insert that extends the life of a high-carbon blade up to 20 times. Each section uses the same cutting edge for easy replacement, allowing you to replace only the sections that show wear.

COMMON ATTACHMENT PLATE

A common attachment plate with a floating coupler makes installation easy with a wide variety of equipment and machinery, including skid-steers, wheel loaders, backhoes, and tractors. The floating coupler reduces negative down pressure from the vehicle, protecting against premature wear of the pusher cutting edge and components.



EASY OPERATION

Operation of the POWER PUSHER plow is conveniently tied into the equipment's controls. Simply raise and lower the lift arm and angle the attachment plate to position the pusher in the correct orientation.

SPECIFICATIONS

| DIMENSIONS | | | | | OPERATIONAL | | | | CONSTRUCTION | | |
|-----------------|--------------------|--------------------|--------------------|--------------------|--|--|--------------------------|-------------------------|-----------------------------------|------------------------|---|
| Blade Width | Blade Height | Side Plate Width | Side Plate Height | Moldboard Radius | Cutting Edge Technology | Cutting Edge Material | Approx. Snow Capacity | Approx. Weight* | Mount Type | Vehicle Compatibility | Vehicle Horsepower Compatibility |
| 8' (2.44 m) | 30" (76.2 cm) | 56" (142.24 cm) | 30" (76.2 cm) | 27" (68.58 cm) | TRACE - Terrain Response Advanced Cutting Edge | High-carbon steel with carbide inserts | 75 cu ft (2.14 cu m) | 2127 lb (964.63 kg) | Skid Steer Attach Plate | Skid-Steer | 45+ hp |
| 10' (3.05 m) | 30" (76.2 cm) | 56" (142.24 cm) | 30" (76.2 cm) | 27" (68.58 cm) | | | 94 cu ft (2.68 cu m) | 2249 lb (1019.95 kg) | Skid Steer Attach Plate | Skid-Steer | 60+ hp |
| 8' (2.44 m) | 36" (91.44 cm) | 56" (142.24 cm) | 36" (91.44 cm) | 27" (68.58 cm) | | | 108 cu ft (3.06 cu m) | 2221 lb (1007.26 kg) | Skid Steer Attach Plate / Coupler | Tractor / Wheel Loader | 40+ hp (Tractor) 60+ hp (Wheel Loader & Backhoe) |
| 10' (3.05 m) | 36" (91.44 cm) | 56" (142.24 cm) | 36" (91.44 cm) | 27" (68.58 cm) | | | 135 cu ft (3.82 cu m) | 2377 lb (1078.00 kg) | Skid Steer Attach Plate / Coupler | Tractor / Wheel Loader | 50+ hp (Tractor) 60+ hp (Wheel Loader & Backhoe) |
| 12' (3.66 m) | 42" (106.68 cm) | 56" (142.24 cm) | 42" (106.68 cm) | 46" (116.84 cm) | | | 219 cu ft (6.19 cu m) | 2644 lb (1199.09 kg) | Coupler | Wheel Loader | 100+ hp |
| 14' (4.27 m) | 42" (106.68 cm) | 56" (142.24 cm) | 42" (106.68 cm) | 46" (116.84 cm) | | | 255 cu ft (7.2 cu m) | 2907 lb (1318.37 kg) | Skid Steer Attach Plate / Coupler | Wheel Loader | 140+ hp |
| 16' (4.88 m) | 42" (106.68 cm) | 56" (142.24 cm) | 42" (106.68 cm) | 46" (116.84 cm) | | | 291 cu ft (8.3 cu m) | 3170 lb (1437.64 kg) | Coupler | Wheel Loader | 140+ hp |

*Approximate weight is less mount

TrynEx International, LLC | Madison Heights, Michigan 48071

snowexproducts.com

TrynEx International, LLC reserves the right under its product improvement policy to change construction or design details and furnish equipment when so altered without reference to illustrations or specifications used. TrynEx or the vehicle manufacturer may require or recommend optional equipment for spreaders. Do not exceed vehicle ratings with a spreader. The following are registered (®) or unregistered (™) trademarks of Douglas Dynamics, LLC: POWER PUSHER™, SnowEx®, TRACE™.

©2024 Douglas Dynamics, LLC
All rights reserved.



Form No. 31029 - 02/24